

Main Villa
Dependance Limonaia



DETAILS

328,58 square metres

VILLA

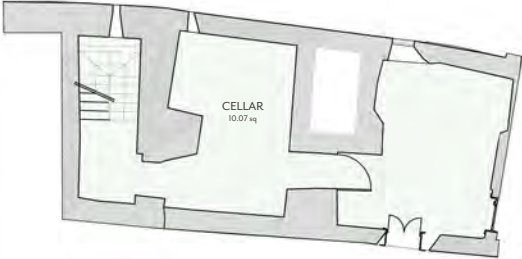
- 5 Bedrooms
- 2 Living rooms
- 1 Dining room
- 1 Kitchen
- 5 Bathrooms
- 1 Half-bath

**DEPENDANCE
LIMONAIA**

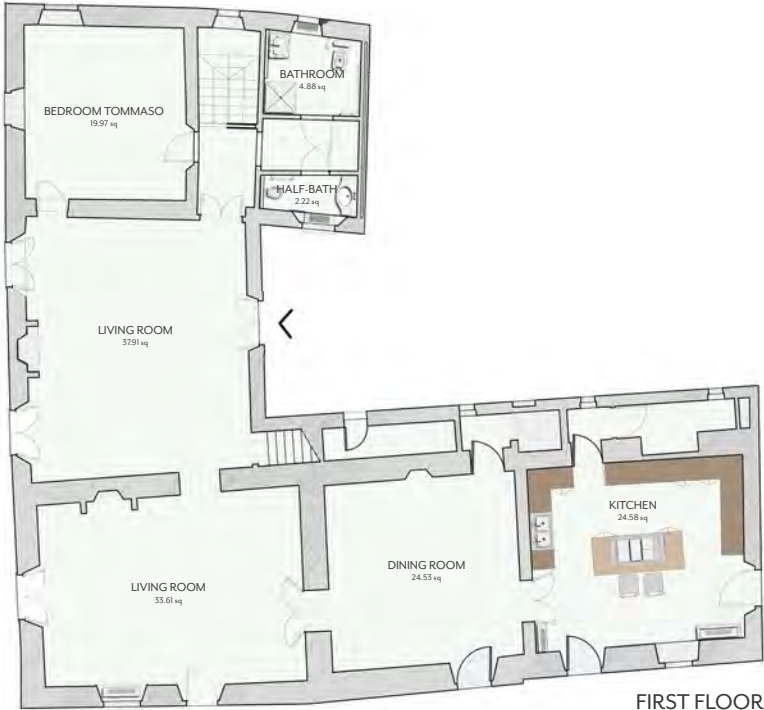
- 1 Bedroom
- 1 Living room
- 1 Bathroom



Main Villa



GROUND FLOOR



FIRST FLOOR



Main Villa



SECOND FLOOR



THIRD FLOOR

Dependance Limonaia

